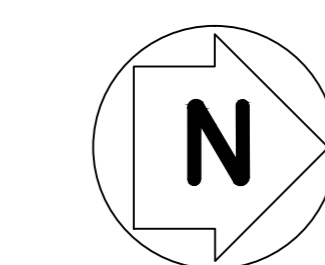




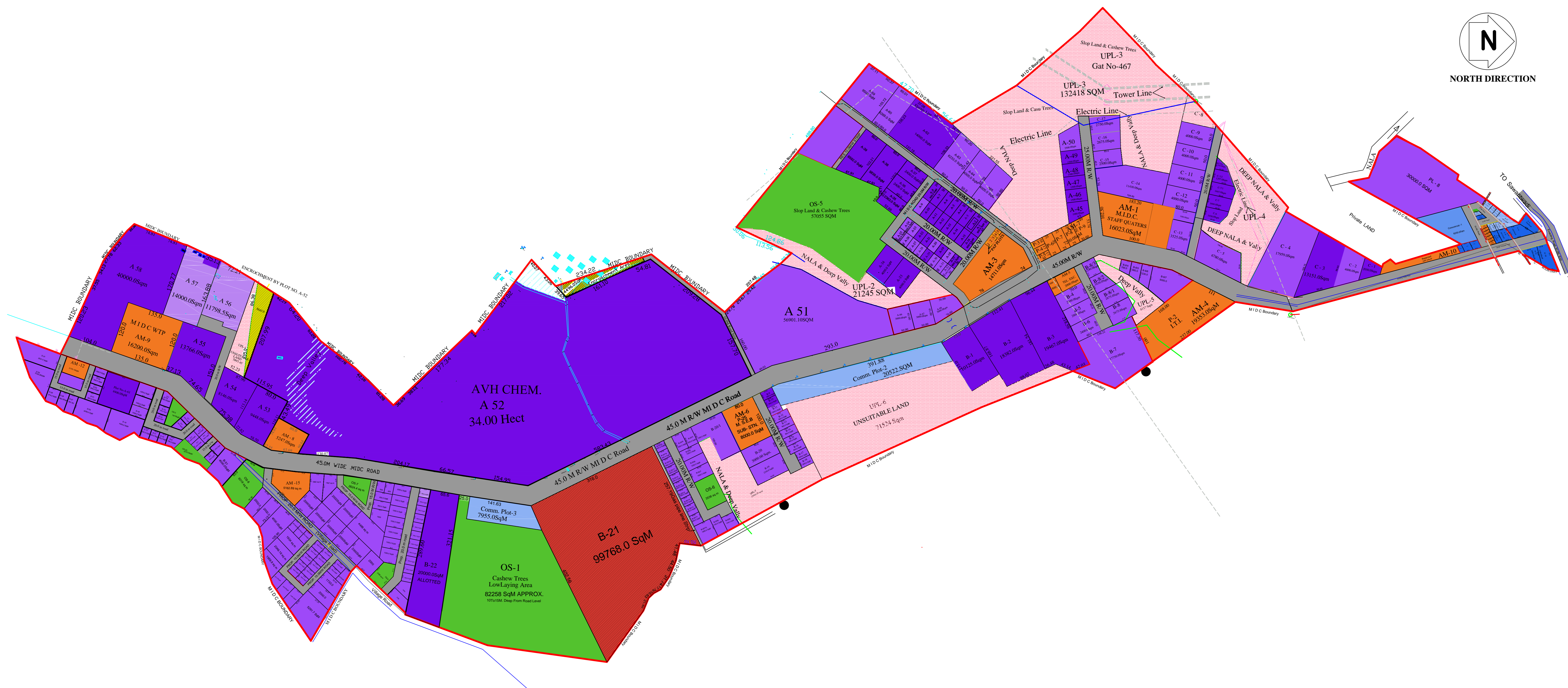
HALKARNI INDUSTRIAL AREA

HALKARNI AREA STATEMENT

| | |
|-------------------------------|---------------------|
| 1.Total area | 192.53 Hect. |
| 2.Deduction | |
| a.Area of plot above 4.0 Hect | 53.68 Hect. |
| b.Area under deep slope/nalla | 29.54 Hect |
| c.Area under encroachment | 0.45 Hect |
| 3.Total deduction area | 83.67 Hect |
| 4.Net area (1-3) | 108.86 Hect |
| 5.Required Open Space (10%) | 10.88 Hect |
| 6.Provided Open Space | 15.79 Hect |
| | (14.5%) |
| 7.Required Amenity (5%) | 5.44 Hect |
| 8.Provided Amenity | 10.07 Hect |
| | (9.25%) |



NORTH DIRECTION



| LAND USE INDEX | | |
|-------------------|---------------------------|-------------------------|
| LAND USE | ALLOTTED PLOTS COLOR CODE | VACANT PLOTS COLOR CODE |
| RESIDENTIAL | [Yellow] | [Yellow] |
| INDUSTRIAL | [Purple] | [Purple] |
| PAP INDUSTRIAL | [Purple] | [Purple] |
| COMMERCIAL | [Blue] | [Blue] |
| PAP COMMERCIAL | [Blue] | [Blue] |
| ROADS | [Grey] | [Grey] |
| AMENITIES | [Green] | [Green] |
| OPEN SPACE | [Green] | [Green] |
| FOREST | [Green] | [Green] |
| NALA | [Blue] | [Blue] |
| ELECTRIC CORRIDOR | [Grey] | [Grey] |
| ENCROACHMENT | [Red] | [Red] |
| DISPUTED LAND | [Red] | [Red] |
| RELEASED LAND | [Red] | [Red] |
| UNPLOTABLE LAND | [Pink] | [Pink] |

MIDC ARCHITECTURE & TOWN PLANNING DEPT.

HALKARNI INDL. AREA DIST. KOLHAPUR

Date: 30-06-2015

| | | | | |
|------------------------|--------------------------|-----------------------------|--------------------------|-----------------------|
| Sd/- SURVEYOR / | Sd/- HEAD SURVEYOR | Sd/- ASST. PLANNER | Sd/- DEPUTY PLANNER | Sd/- REGIONAL OFFICER |
| Sd/- ASST. PLANNER(HQ) | Sd/- DEPUTY PLANNER (HQ) | Sd/- ASSOCIATE PLANNER (HQ) | Sd/- SENIOR TOWN PLANNER | |
| Sd/- CHIEF PLANNER | DY.CEO (2) | | JT. CEO | |

| LIST OF PLOTS ABOVE 4.0 HECT. | LIST OF PLOTS BELOW 4.0 HECT. | | | | COMM.USE | AMENITY AREA | OPEN SPACE AREA |
|------------------------------------|-------------------------------|-----------------------------|--------------------------------|---------------|--------------|---------------------------|--------------------|
| A-52 22.91 HECT. | A-1 to 8 (each 900) 7200.00 | A-56 20213.00 | B-22 23576.00 | C-13 2973.00 | P-10 1736.00 | P-25 394.00 | OS-1 8.22 HECT. |
| A-51 34.00 HECT. | A-9 to 16(each 800) 6400.00 | A-57 9000.00 | B-23 19544.00 | PL-8 30000.00 | P-11 1000.00 | P-26 215.00 | OS-2&2A 0.40 HECT. |
| B-21 MAGMA (court case) 9.97 HECT. | A-17 to 24 (each 600) 4800.00 | A-58 9108.00 | B-24 17786.00 | | P-12 1020.00 | COMM.USE-1 6200.00 | OS-3 0.0 HECT. |
| | A-25to 32 (each 600) 4800.00 | A-59 12395.00 | B-25 17258.00 | | P-13 1223.00 | COMM.USE-2 20522.00 | OS-4 0.01 HECT. |
| | A-33 to34 (each 4000) 8000.00 | A-60 6050.00 | C-1 2050.00 | | P-14 637.00 | COMM.USE-3 7955.00 | OS-5 5.71 HECT. |
| | A-35 2363.00 | A-61 6400.00 | C-2 4646.00 | | P-15 441.00 | TOTAL 44102.00 | OS-6 0.35 HECT. |
| | A-36 to 37(each 2400) 4800.00 | A-62 14000.00 | C-3 13151.00 | | P-16 294.00 | UNSUITABLE LAND 36.64HECT | OS-7 0.26 HECT. |
| | A-45 1980.00 | B-1 10125.00 | C-4 21368.00 | | P-17 333.00 | | OS-8 0.63 HECT. |
| | A-46to 49(each 1500) 1500.00 | B-2 18382.00 | C-5 4114.00 | | P-18 947.00 | | OS-9 0.21 HECT. |
| | A-50 2500.00 | B-3 19467.00 | C-6 20000.00 | | P-19 231.00 | | TOTAL 15.79 HECT. |
| | A-53 9448.00 | B-4 to 7(each 2000) 8000.00 | C-7 8980.00 | | P-20 223.00 | | |
| | A-54 9957.00 | B-8 7000.00 | C-8 5900.00 | | P-22 148.00 | | |
| | A-55 16905.00 | B-9 to18(each 600) 6000.00 | C-9 to 12 (each 4000) 16000.00 | | P-23 191.00 | | |
| | | B-19 2700.00 | | | P-24 392.00 | | |
| | | B-20 3000.00 | | | | | |
| TOTAL 66.88 HECT. | | | | | | | |